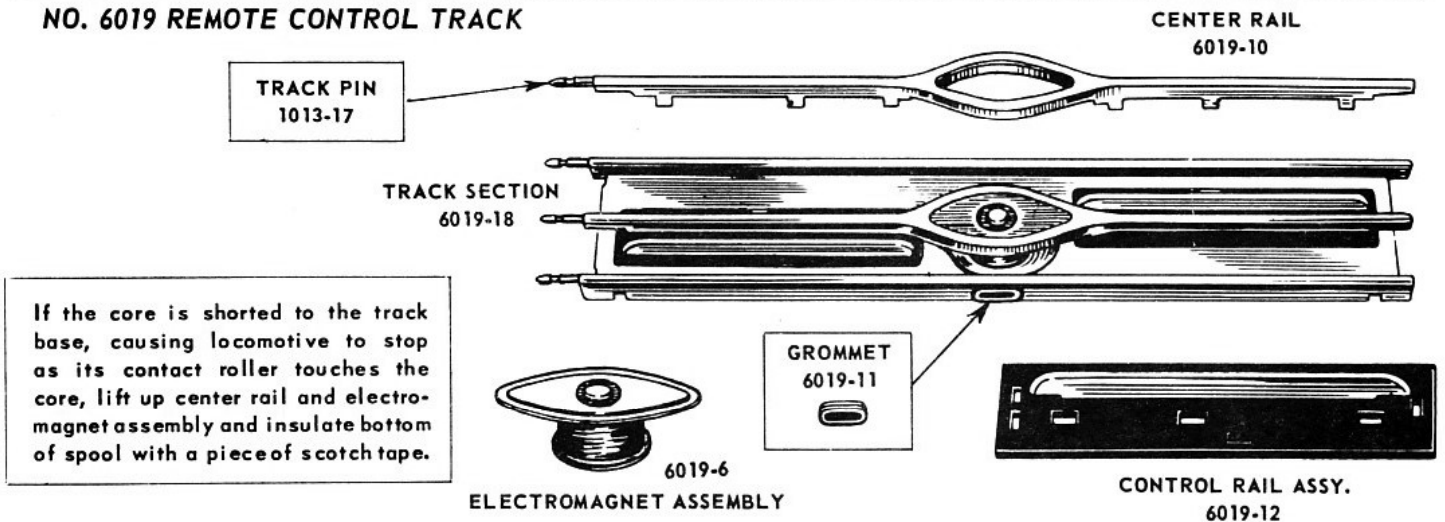


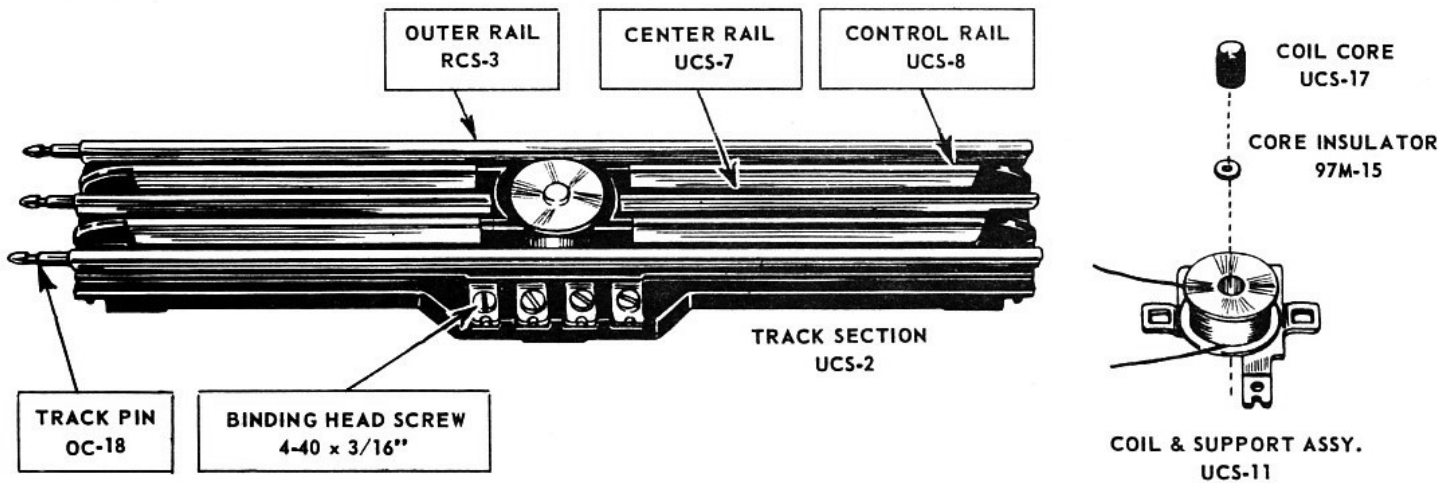
LIONEL SERVICE MANUAL

NO. 6019 REMOTE CONTROL TRACK

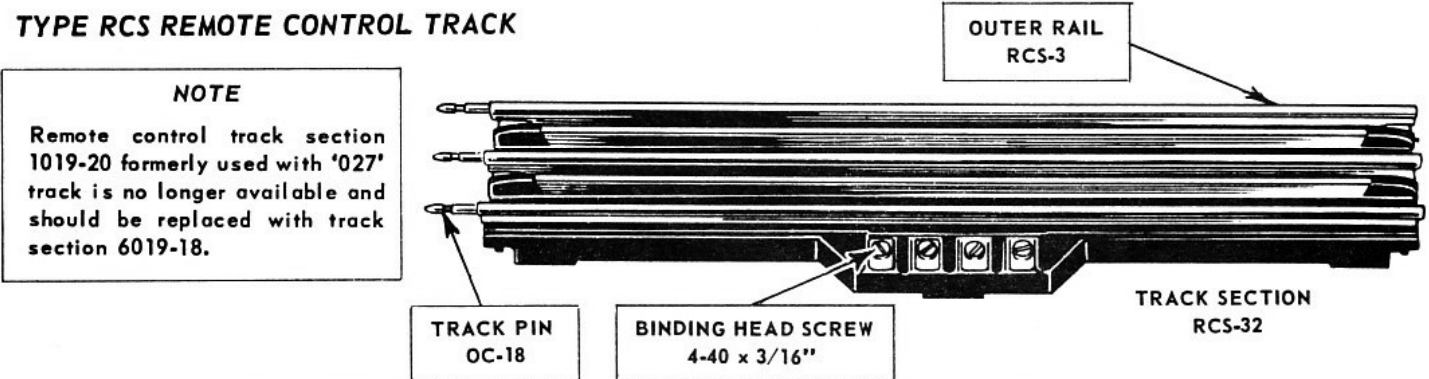


If the core is shorted to the track base, causing locomotive to stop as its contact roller touches the core, lift up center rail and electromagnet assembly and insulate bottom of spool with a piece of scotch tape.

TYPE UCS REMOTE CONTROL TRACK



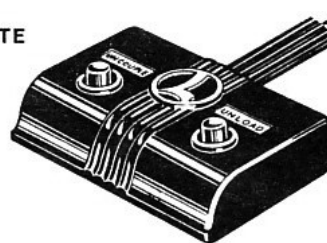
TYPE RCS REMOTE CONTROL TRACK



NOTE
Remote control track section 1019-20 formerly used with '027' track is no longer available and should be replaced with track section 6019-18.

The three controllers listed are interchangeable electrically and differ from each other only in the treatment of the cable ends and in details of internal parts. Controller cables differ from each other in the same way. Controller Cable UCS-44 includes the spade lug terminals.

CONTROLLER COMPLETE
RCS-20
6019-20
UCS-40



CONTROLLER CABLE
UCS-44
RCS-30
6019-30
ALSO SOLD BY THE FOOT